

Rental Catalog

WWW.TALLMANEQUIPMENT.COM

TALLMAN
EQUIPMENT CO., INC.

877.860.5666

EMPLOYEE OWNED





TALLMAN EQUIPMENT CO., INC.

When new equipment purchases aren't an option, Tallman Equipment's Rental Department is here to meet your shorter-term needs! We house a large inventory of the most commonly used equipment for the construction and maintenance of electrical transmission and distribution systems.

ABOUT TALLMAN EQUIPMENT

Since 1952 Tallman Equipment Company has been trusted by linemen as a manufacturer and distributor of tools and equipment. With an experienced and customer-focused sales and service team, we confidently serve the electrical utility, transmission, distribution, telecommunications, and industrial markets.

BATTERY POWERED TOOLS



12-Ton Crimper



15-Ton Crimper



ACSR Cable Cutter



**Underground Cable Cutter
with Wireless Remote**



Impact Wrenches

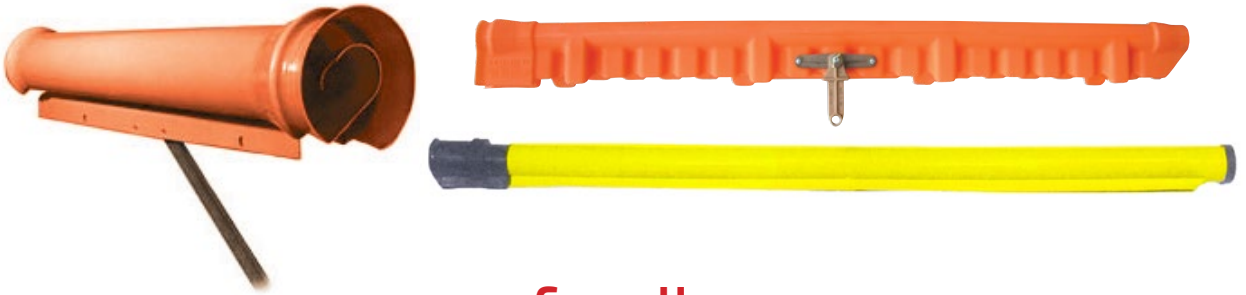


We also rent Hydraulic
Impact Wrenches

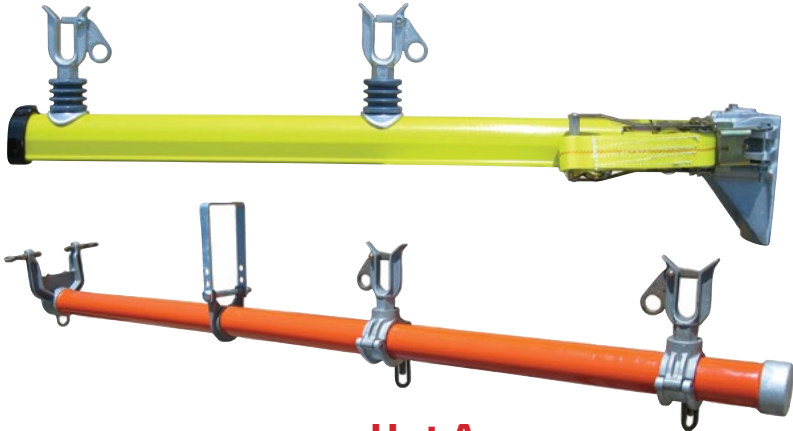


**Magnetic
Drills**

FIBERGLASS AND COVER-UP



Cover Up



Hot Arms



Load Buster



**Fiberglass
Hook Ladders**



GROUNDS & JUMPERS



Groundsets & Jumper Sets

Many Standard Lengths
Many Standard Clamps



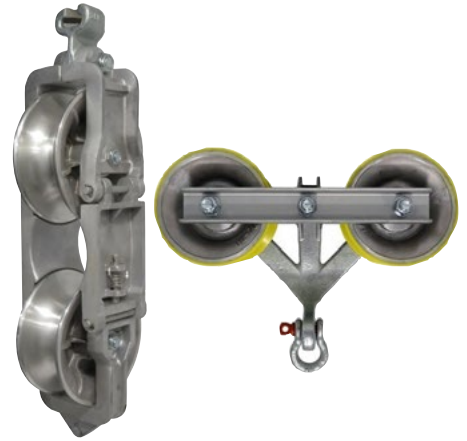
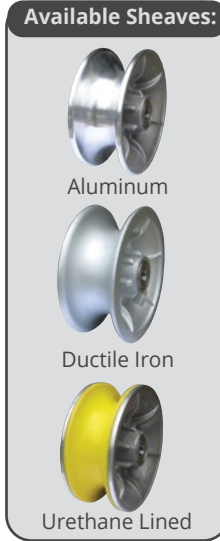
T2® Traveling Grounds

T2 795 through 1113 Wire Capacity
or T2 4/0 through 556 Wire



Equipotential Ground Mats

STRINGING BLOCKS & ACCESSORIES



CB-1 and CB-2 Universal Blocks

7" Sheaves

- ☑ Aluminum, Ductile Iron or Lined Sheaves Available
- ☑ Can be Grounded

Uplift & Uplift/Hold Down Blocks

- ☑ Uplift Blocks available with Aluminum, Ductile Iron or Lined Sheaves
- ☑ Uplift/Hold Down blocks have 2 Lined Sheaves



Standard Blocks

12" - 42" Sheaves

- ☑ Standard or Wide



Grounded Blocks

12" - 42" Sheaves

- ☑ Standard or Wide
- ☑ Roller Keeps Contact with Conductor



Helicopter Blocks

7" - 42" Sheaves

- ☑ Standard or Wide
- ☑ "Snap-Lock" Fold Away Arm

STRINGING BLOCKS & ACCESSORIES



Crossarm Bracket

For Universal Blocks

- ☉ Two 4-1/2" x 5-1/2" Styles
- ☉ One 6-1/4" x 7" Style



Insulator Bracket

For Universal Blocks

- ☉ Hex Head and Hand-Wheel styles



Ball Clevis



Y-Ball Clevis



Grounded Helicopter Blocks

22" - 28" Sheaves

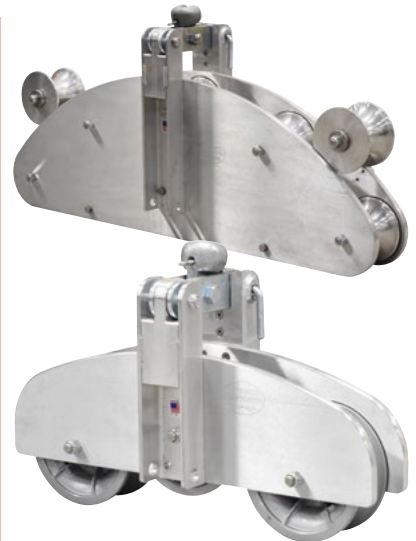
- ☉ Standard or Wide
- ☉ "Snap-Lock" Fold Away Arm



Tandem Blocks

28" - 42" Sheaves

- ☉ 28" Standard or 28" - 42" Wide



Radius Blocks

3 Roller 22" Sheaves

5 Roller 24" Sheaves

- ☉ Aluminum, Ductile Iron or Lined Sheaves Available

POLE PULLING & SETTING



**Pneumatic
and
Hydraulic
Tamps**



**Ground Rod
Driver**



Pole Puller



**Anchor
Torque
Indicators**



Pole Dolly



Lasher



Alturnumats

CONDUCTOR EQUIPMENT



**Poleboss
Stringing System**



Pre-Splice Cutter



Grips



Spider Systems



Sag Scope

RIGGING & LIFTING



Hoists



C308-1170

Capstan Hoists



Dynamometers



Rigging Blocks

New Service
Rubber Goods Testing



TALLMAN
EQUIPMENT CO., INC.
EMPLOYEE OWNED

Presses & Pumps



60 Ton Press



100 Ton Press



**U Dies, P Dies, S Dies,
60 Ton Dies, 100 Ton Dies**



10,000 psi High Pressure Pumps



Intensifier



Tallman Rental
So easy it's a snap!

Trust **TALLMAN**



www.tallmanequipment.com/rentals

Call Toll Free: 877-860-5666

International: 630-860-5666



OUR PROMISE



Fast, Friendly Service



Best Tools in the Industry



Tested & Certified



So easy it's a snap!



EMPLOYEE OWNED