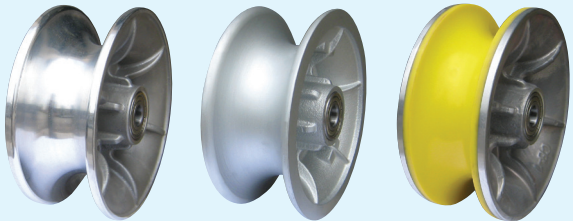


## CB-1 UNIVERSAL STRINGING BLOCK

- Gate style: spring loaded latch that can be operated with a hot stick
- High-strength aluminum alloy frame
- Heavy-duty sealed ball bearings packed with synthetic aviation grease
- 3 mounting options: crossarm bracket, insulator bracket, or suspended using a mounting attachment



### AVAILABLE SHEAVES:



Aluminum

Ductile Iron

Urethane Lined

### OPENING:



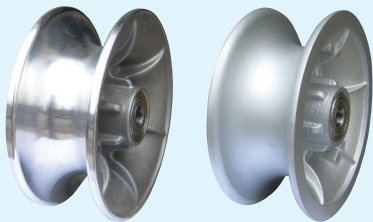
PART #	SHEAVE	SHEAVE WIDTH	SHEAVE DIAMETER	FRAME OPENING	MAX CABLE DIAMETER	WLL	WEIGHT
DNCB-1	Aluminum	3"	7"	3-3/4" H x 3-1/8" W	2-1/4"	2,500 lbs.	8.5 lbs.
DNCB-1DI	Ductile Iron	3"	7"	3-3/4" H x 3-1/8" W	2-1/4"	2,500 lbs.	13.5 lbs.
DNCB-1LS	Urethane Lined	3"	7"	3-3/4" H x 3-1/8" W	2"	2,500 lbs.	9 lbs.

## CB-1G GROUNDED STRINGING BLOCK

- Gate style: spring loaded latch that can be operated with a hot stick
- High-strength alloy frame
- Ground stud length: 5-1/8"
- Heavy-duty sealed ball bearings packed with synthetic aviation grease
- 3 mounting options: crossarm bracket, insulator bracket, or suspended using a mounting attachment



### AVAILABLE SHEAVES:



Aluminum

Ductile Iron

### OPENING:



PART #	SHEAVE	SHEAVE WIDTH	SHEAVE DIAMETER	FRAME OPENING	MAX CABLE DIAMETER	WLL	WEIGHT
DNCB-1GAL	Aluminum	3"	7"	3-3/4" H x 3-1/8" W	2-1/4"	2,500 lbs.	9 lbs.
DNCB-1GDI	Ductile Iron	3"	7"	3-3/4" H x 3-1/8" W	2-1/4"	2,500 lbs.	14 lbs.